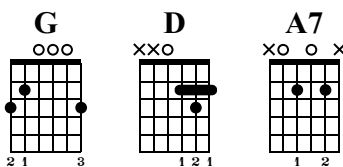


# Midnight Special

Tabbed by Richard Dopler



Moderate ♩ = 126



Refrain

G

D



A7

D

1.Strophe



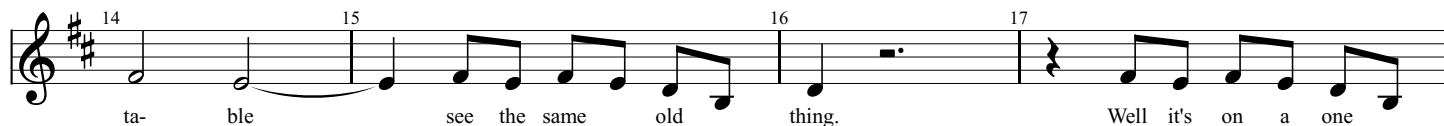
G

D



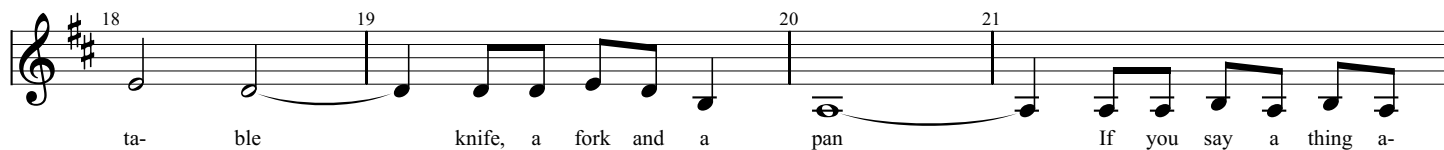
A7

D



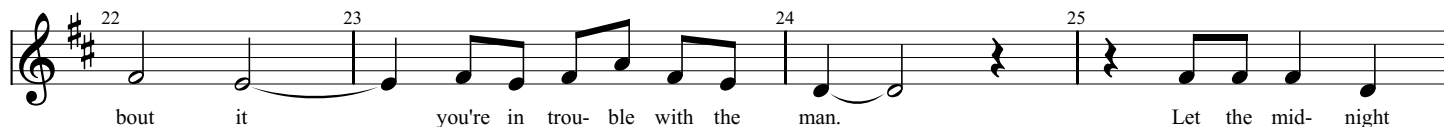
G

D



A7

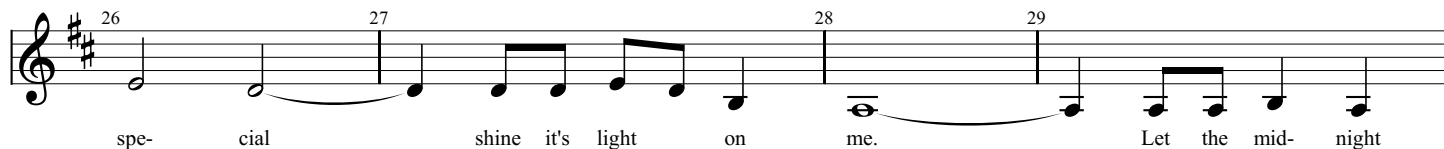
D



Refrain

G

D



**A7** **D** 2.Strophe

30 31 32 33

spe- cial shine it's e- ver lov- ing light on me. If you ev- er go to

**G** **D**

34 35 36 37

Hous- ton you bet- ter walk right. You bet- ter not

**A7** **D**

38 39 40 41

stag- ger and you bet- ter not fight. Sher- riff ben- son will a-

**G** **D**

42 43 44 45

rest you, and he'll car- ry you down. you can bet you but- tom

**A7** **D**

46 47 48 49

dol- lar you're sug- ar- land bound. Let the mid- night

Refrain

**G** **D**

50 51 52 53

spe- cial shine it's light on me. Let the mid- night

**A7** **D** 3.Strophe

54 55 56 57

spe- cial shine it's e- ver lov- ing light on me. Yon- der comes doc- tor

**G** **D**

58 59 60 61

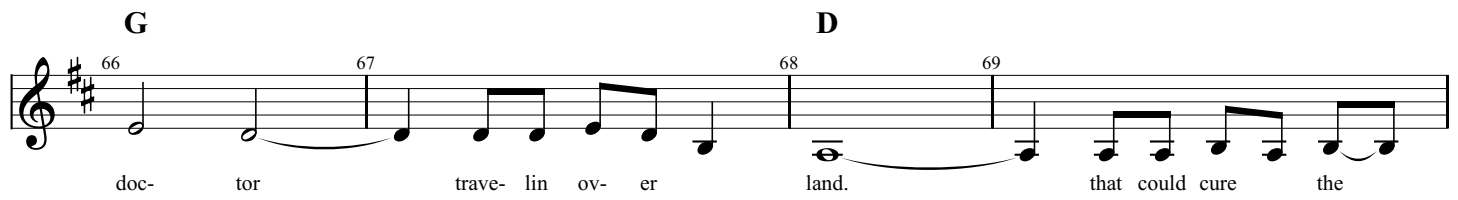
Mel- ton, tell me how do you know? He gave me a

**A7** **D**

62 63 64 65

tab- let on the day be- fore. there nev- er was a

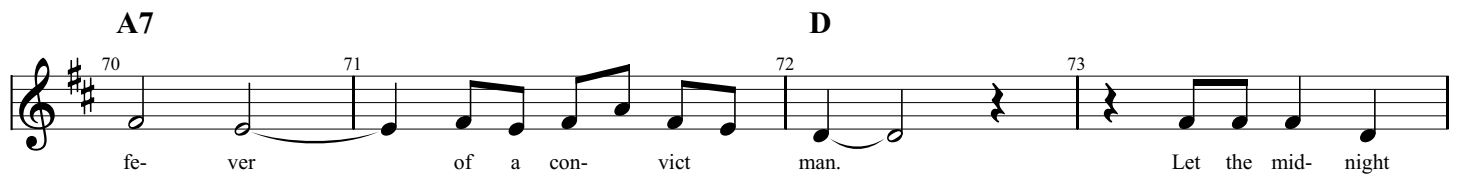
**G** **D**



66 67 68 69

doc- tor trave- lin ov- er land. that could cure the

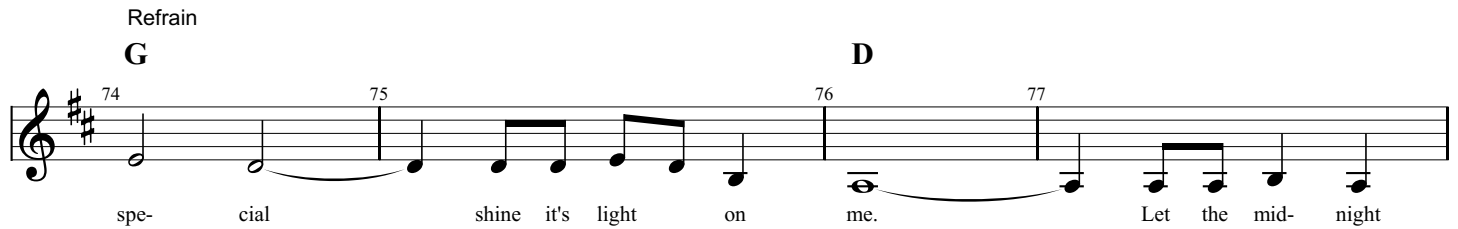
**A7** **D**



70 71 72 73

fe- ver of a con- vict man. Let the mid- night

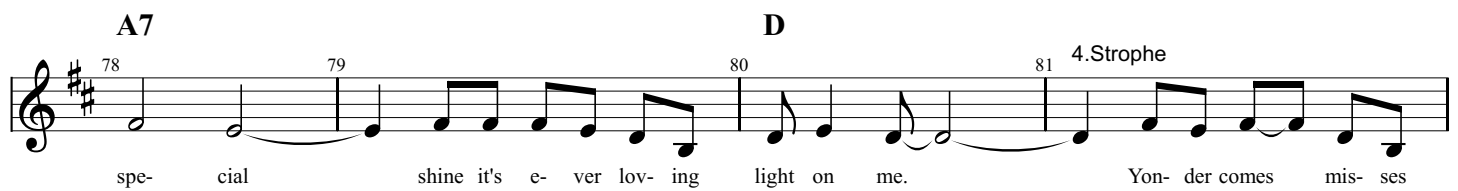
Refrain **G** **D**



74 75 76 77

spe- cial shine it's light on me. Let the mid- night

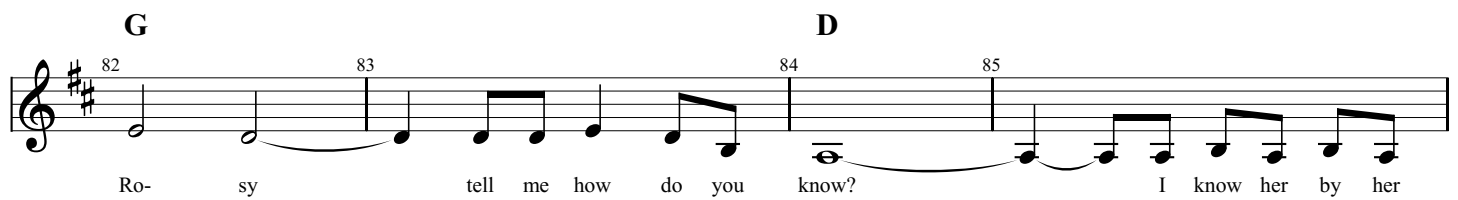
**A7** **D** 4. Strophe



78 79 80 81

spe- cial shine it's e- ver lov- ing light on me. Yon- der comes mis- ses

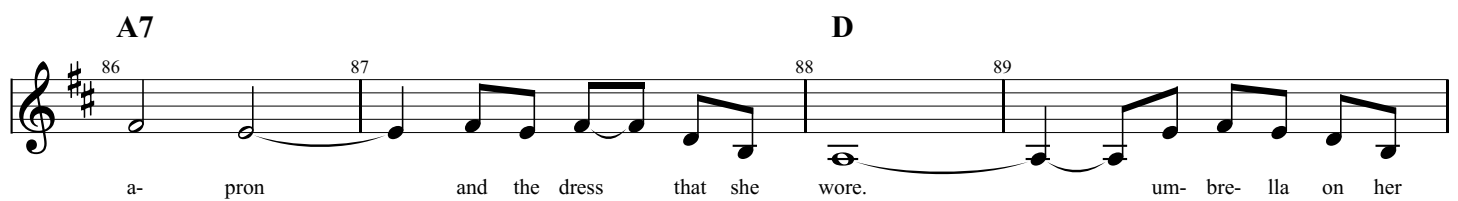
**G** **D**



82 83 84 85

Ro- sy tell me how do you know? I know her by her

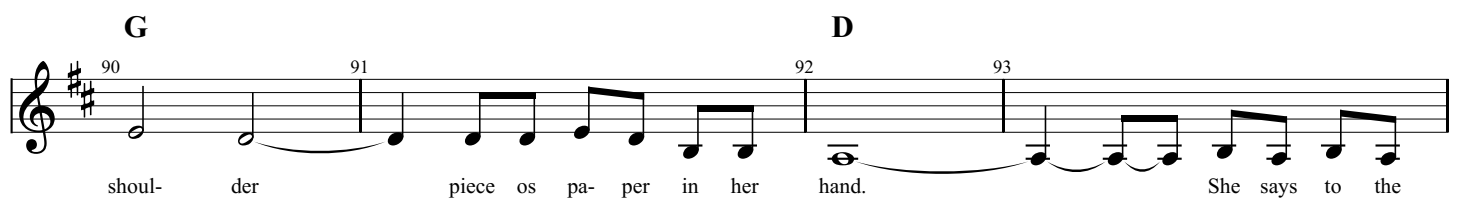
**A7** **D**



86 87 88 89

a- pron and the dress that she wore. um- bre- lla on her

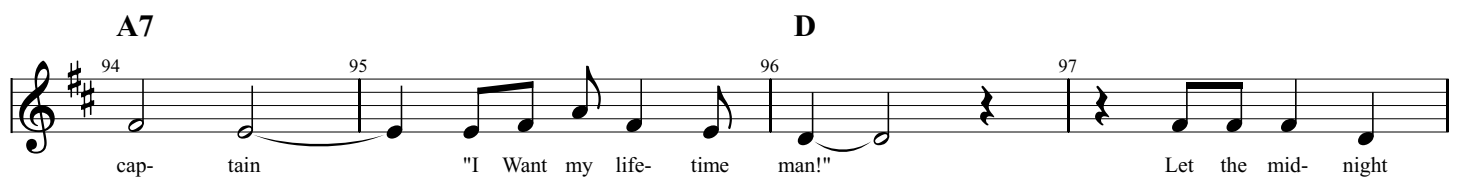
**G** **D**



90 91 92 93

shoul- der piece os pa- per in her hand. She says to the

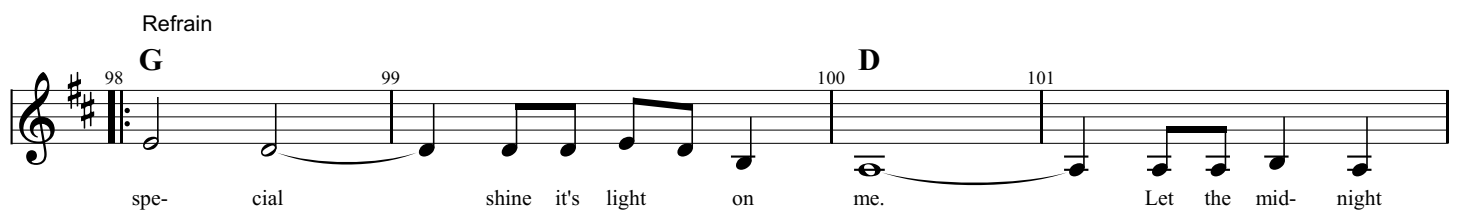
**A7** **D**



94 95 96 97

cap- tain "I Want my life- time man!" Let the mid- night

Refrain **G** **D**



98 99 100 101

spe- cial shine it's light on me. Let the mid- night

A7

D

1.

102

103

104

105

spe- cial shine it's e- ver lov- ing light on me.

2.

106